

ATTACHMENT E

ATTACHMENT E

**PITT STREET FAÇADE TREATMENT
STUDY**

1 ALFRED STREET, SYDNEY

3.6 AMENDMENTS AND CONSIDERATIONS

3.6.1 FOUR DIMENSIONAL FRAME ELEMENT

Issue	Discussion	Conclusion
The party/jury requested that KHA consider reinstalling the masonry walls to the east of Building B	<p>During the design development of the project, the brief evolved to require views from the apartments to the east side of the low rise tower.</p> <p>KHA explored a number of options to provide discrete openings in the masonry wall to the east. Figures 17 - 28 record the exploration process.</p>	<p>It was concluded that none of the design options with discrete openings were as architecturally successful as providing a glazed expression to the east elevation of the low rise tower.</p> <p>KHA believe that the glazed expression is an acceptable design solution that retains the integrity of the scheme.</p>

ATTACHMENT E

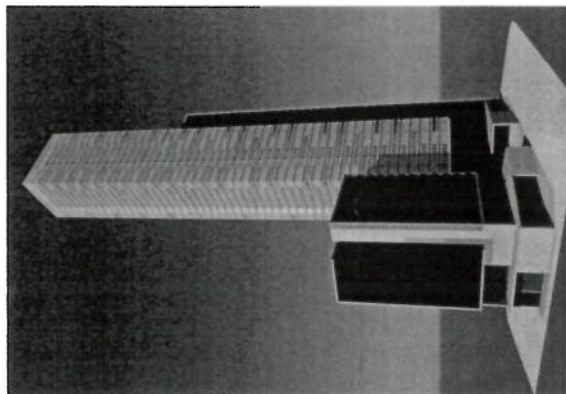


Figure 17 - Design Option 1

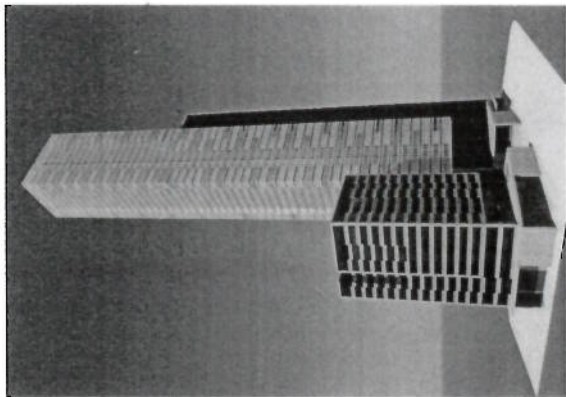


Figure 18 - Design Option 2

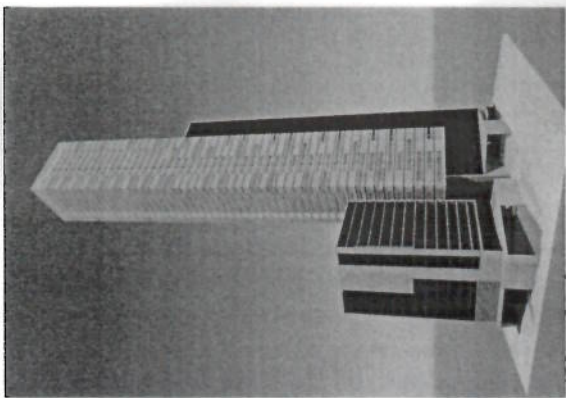


Figure 19 - Design Option 3

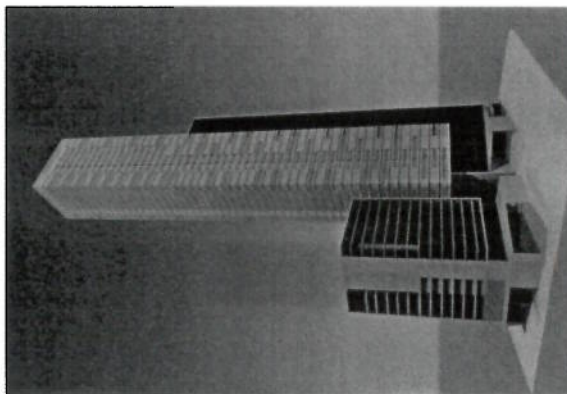


Figure 20 - Design Option 4

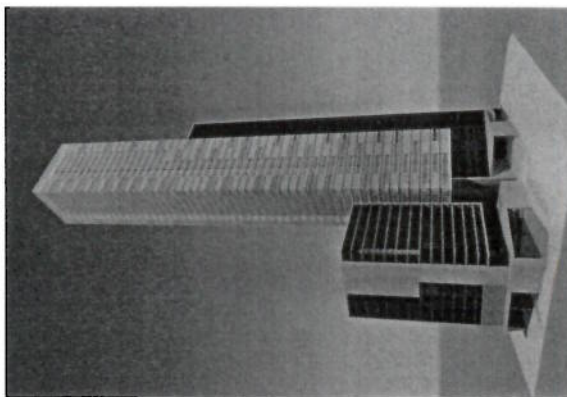


Figure 21 - Design Option 5

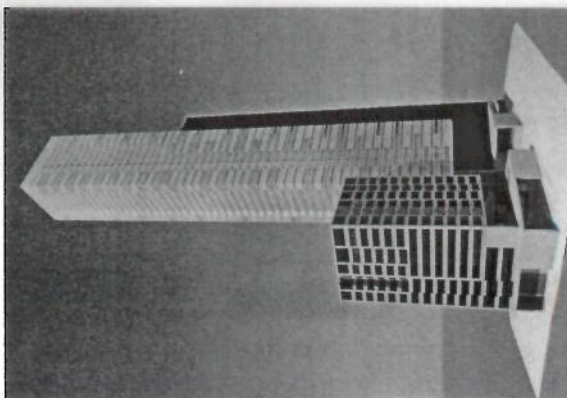


Figure 22 - Design Option 6

ATTACHMENT E

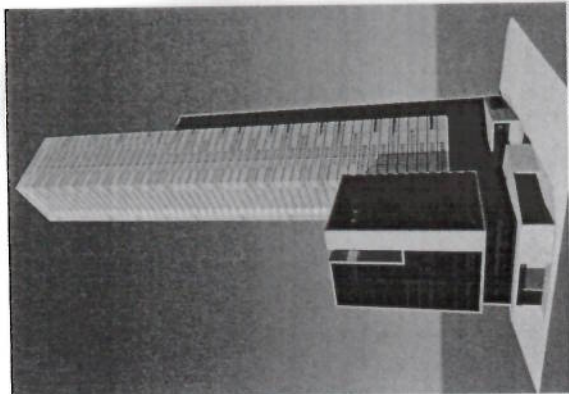


Figure 25 - Design Option 9

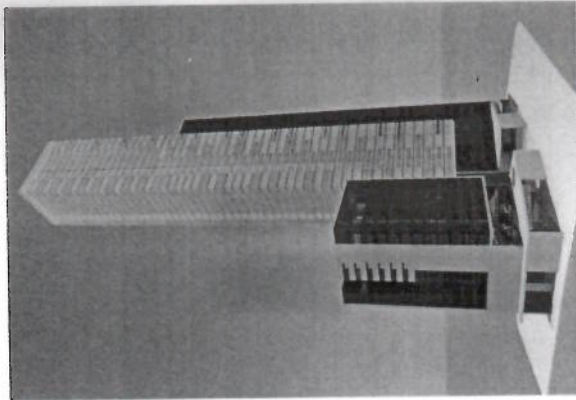


Figure 28 - Design Option 12

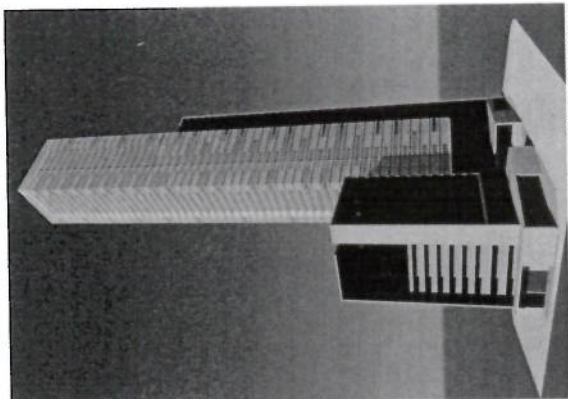


Figure 24 - Design Option 8

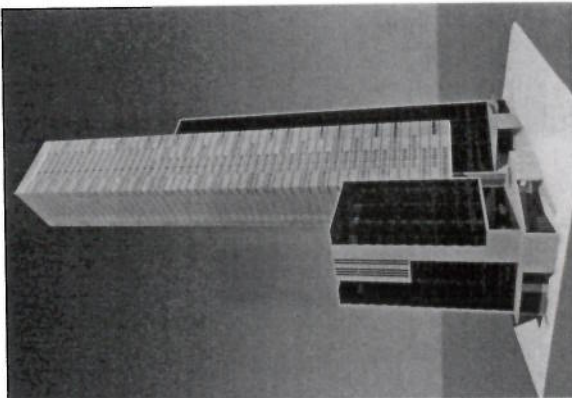


Figure 27 - Design Option 11

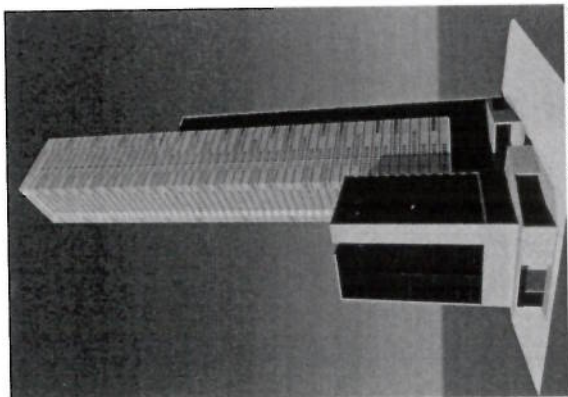


Figure 23 - Design Option 7

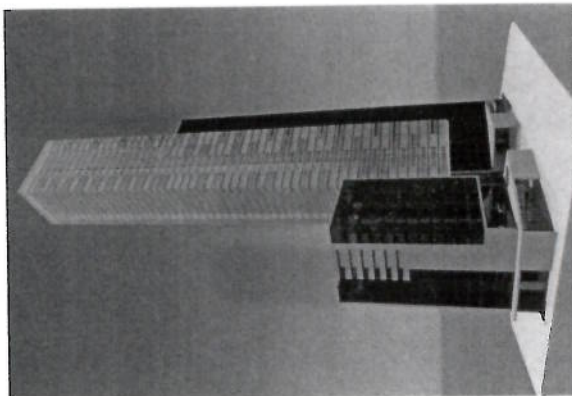


Figure 26 - Design Option 10